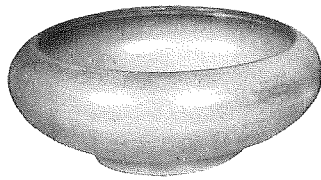
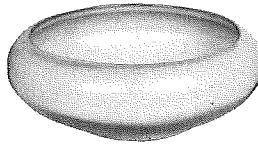


Appropriate Containers for Flower Arrangements and Planters



212—8" ROUND BOWL



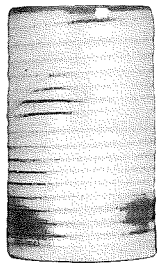
212-2—6½" ROUND BOWL



212-4- 5" ROUND BOWL -



72—10" RINGED CYLINDER VASE



172—6½" RINGED CYLINDER VASE



272—4" RINGED CYLINDER VASE



M2—6"—18 OZ. MUG

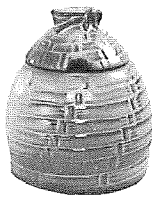


5M—5½"—16 OZ. MUG



4M—4½"—18 OZ. MUG

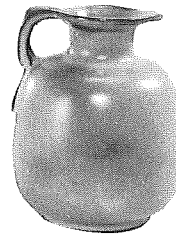
HONEY JUGS—SYRUP PITCHERS—FLOWER CONTAINERS



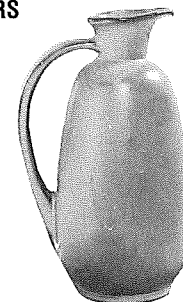
803—HONEY JAR W/LID



838—10 OZ. PITCHER



833—24 OZ. PITCHER



835—24 OZ. PITCHER

"MUGS" for coffee, tea, milk, soup, soda. YOU NAME IT!



C1



C2



C3



C5



C9